
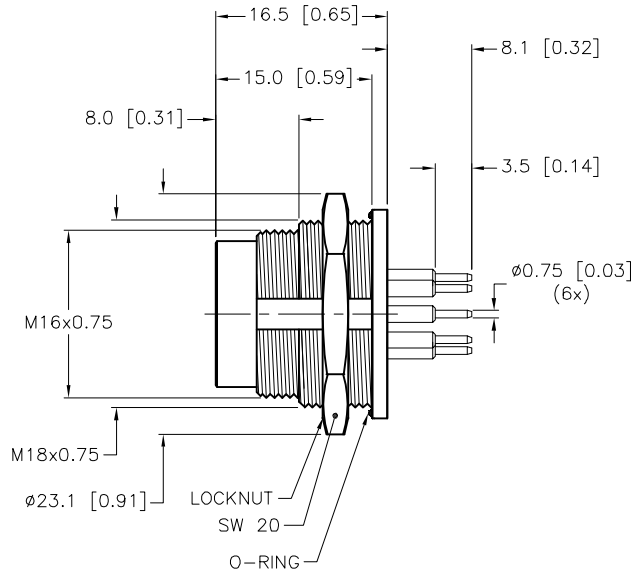
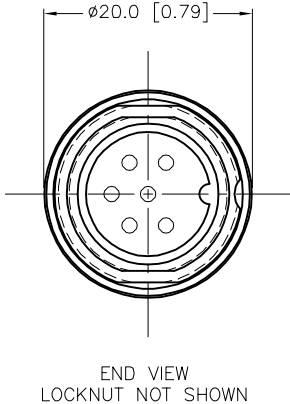
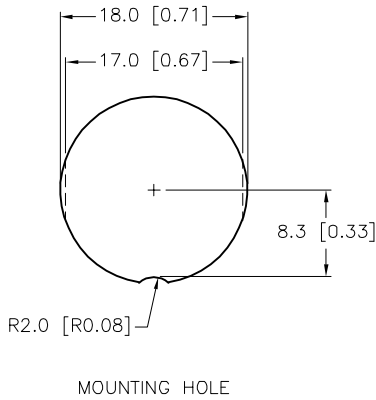
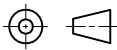


SPECIFICATIONS	
CONTACT CARRIER MATERIAL	PBT
CONTACT MATERIAL/PLATING	BRASS/GOLD
HOUSING MATERIAL/PLATING	DIE-CAST ZINC/NICKEL
RATED CURRENT [A]	7.0 A
RATED VOLTAGE [V]	300 VAC/DC
CONDUCTORS	PCB PINS
TEMPERATURE RANGE	-30°C to +80°C (-22°F to +176°F)
PROTECTION CLASS	MEETS IEC IP67
MAX PANEL THICKNESS	4.0mm [0.16"]

 M16 connector



SOURCE DRAWING - FOR REFERENCE ONLY

RELATED DOCUMENTS					3RD ANGLE PROJECTION		THIS DRAWING IS CONFIDENTIAL AND THE PROPERTY OF TURCK INC. USE OF THIS DOCUMENT WITHOUT WRITTEN PERMISSION IS PROHIBITED.		3000 CAMPUS DRIVE MINNEAPOLIS, MN 55441 1-800-544-7769 (763) 553-7300 (763) 553-0708 fax www.turck.us	
1. 2. 3. 4.							DRFT RDS		DATE 04/03/07	
MATERIAL					ALL DIMENSIONS DISPLAYED ON THIS DRAWING ARE FOR REFERENCE ONLY		APVD		SCALE 1=.7	
SEE SPECIFICATIONS					CONTACT TURCK FOR MORE INFORMATION		UNIT OF MEASUREMENT		DESCRIPTION	
FINISH					DO NOT SCALE THIS DRAWING		MILLIMETER [INCH]		BSFD 6-PCB	
SEE SPECIFICATIONS									IDENTIFICATION NO.	
									U2-05843	
									REV	
									E	
									FILE: U2-05843	
									SHEET 1 OF 1	

E	UPDATE NOTE	NF	12/13/24	80878
REV	DESCRIPTION	BY	DATE	ECO NO.